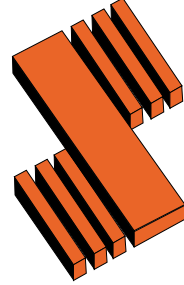


SIPOREX[®]
سيبوركس



منذ عام 1976 Since 1976
شركة المباني الخفيفة
شركة مساهمة سعودية مقفلة

PRE-QUALIFICATION DOCUMENTS

Lightweight Construction Company
(LCC-Siporex)

P.O. Box 6230, Riyadh 11442
Tel. 498 1800; Fax 498 2072
info@lccsiporex.com

www.lccsiporex.com

TABLE OF CONTENTS

SN		Page(s)
1.	Company Introduction.....	2
2.	Company Profile.....	3 - 4
3.	Offices Location Maps.....	5 - 7
4.	Organizational Structure	8
5.	ISO Certificate	9
6.	Quality Policy.....	10
7.	Commercial Registration	11
8.	Industrial License.....	12
9.	Chamber of Commerce.....	13
10.	USGBC Membership.....	14
11.	Civil Defense Certificate.....	15
12.	Zakat Certificate	16 - 17
13.	GOSI Certificate	18
14.	Saudization Certificate	19
15.	VAT Certificate	20 - 21
16.	Environmental Protection Certificate.....	22 - 23
17.	Certificates of Appreciation / Recommendations.....	24 - 34
18.	Submittals / Approvals	35 - 42
19.	Test Report(s)	43
20.	List of Some SIPOREX Projects	44 - 50

LCC-SIPOREX

(Lightweight Construction Company)

Lightweight Construction Company, SIPOREX was established in 1976 for the objective of creating a new building industry to produce different elements of insulated precast concrete which form a complete building system with characteristics suitable to the nature and climate of Middle East and specially the Gulf region and Arabian Peninsula.



The Head Office and production facilities are located in 2nd Industrial City near Al-Kharj road, Riyadh, with a production capacity of 330,000 m³ per year.

SIPOREX is used as a load bearing structural material normally for one, two or three storey buildings. It is available in the form of lightweight blocks and reinforced precast units for walls, lintels, floor and roof slabs forming a complete building system with characteristics suitable to the extreme climate of the Middle East. It has superior insulation properties against temperature variation, sound penetration and fire. The units can be assembled by semiskilled labor.

SIPOREX materials have been supplied to thousands of projects inside and outside of Saudi Arabia. SIPOREX materials have been exported to GCC countries, Japan, Taiwan, Jordan, Djibouti, Ethiopia, Sudan & Yemen.



SIPOREX Company complies with the requirements of ISO 9001:2015 with Certified Registration # SA-10031-QMS

Company Profile

I. Name & Complete Address of the Company:

LCC-SIPOREX (Lightweight Construction Company)
2nd Industrial Area, Riyadh 14331
P.O. Box 6230, Riyadh 11442, Kingdom of Saudi Arabia
Tel. # : +966 11 498 1800
Fax # : +966 11 498 2072
Email : info@Lccsiporex.com
Website : www.Lccsiporex.com

Contact : Engr. Mohammed Shalabi
Mobile : 055 325 8719

(See Page 5 for location map of Riyadh Head Office)

II. Complete Addresses of Branches:

Jeddah Office : Bin Hamad 3 – Steen Street
Al Bawadi District, Jeddah 23443
Opposite to SMSA Express
4th Floor, Office # 19
Contact 1 : Engr. Sobhy Mahmoud
Mobile : 055 565 1925
Contact 2 : Engr. Ahmed Alterkawi
Mobile : 053 301 1811

AlKhobar Office : Al Jawhara Building
4th Street corner Jeddah Street
Al-Thuqbah, Al Khobar 34623 3315
P.O. Box 5236 Dammam 31422
Contact : Engr. Ahmed Dgeimat
Mobile : 050 496 6911
(See Page 6 & 7 for location maps)

III. Type of Organization:

Saudi Closed Joint Stock Company

IV. Name of Shareholders:

- a.
- b.
- c.
- d.
- e.
- f.
- g.
- h.
- i.
- j.

Company Profile

V. **Place & Date of Company Foundation:**

Riyadh, Saudi Arabia – 27.05.1396 H
26.05.1976 G

VI. **Organizational Structure** (Refer to Page 8)

VII. **Quality Management System:**

ISO 9001:2015 & Quality Policy (See Page 9)

VIII. **Commercial Documents:** (See Pages 11 – 15)

Certificate for Commercial Registration, Industrial Trading Ministry Certification, Chamber of Commerce Membership, USGBC Membership Certificate, Civil Defense Certificate.

IX. **Financial Documents:**

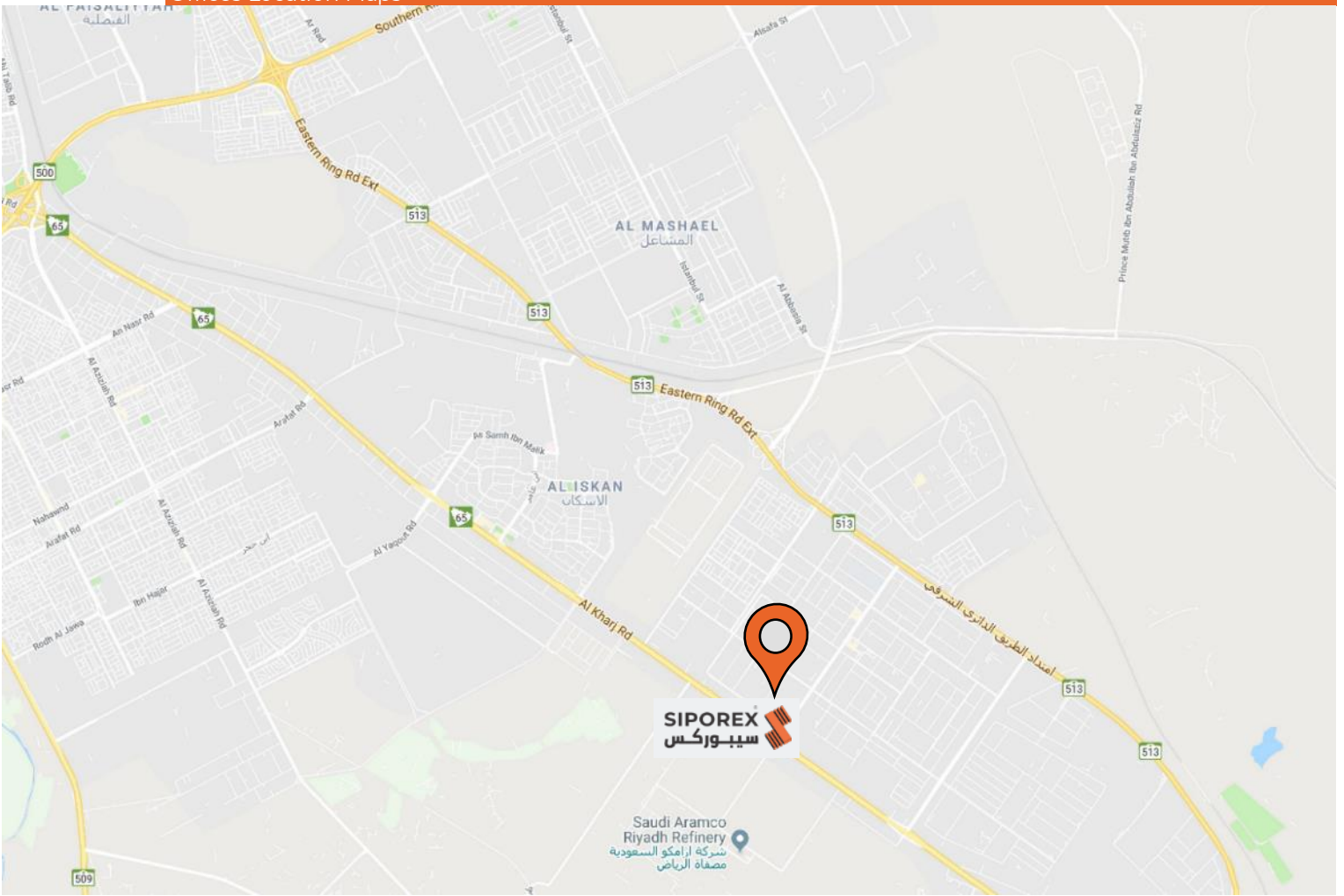
Zakat Certificate, VAT Certificate

X. **Bank Details:**

Bank Name	SABB
Branch	Head Office, Riyadh
Bank A/C Name	Lightweight Construction Co.
Bank A/C No.	896 040474 001
IBAN No.	SA 58 4500 0000 8960 4047 4001
SWIFT Code	SABBSARI

Bank Name	Al-Rajhi Bank
Branch	2 nd Industrial Area, Riyadh
Bank A/C Name	Lightweight Construction Co.
Bank A/C No.	450 608 010 711 112
IBAN No.	SA 73 8000 0450 6080 1071 1112
SWIFT Code	RJHISARI

Offices Location Maps



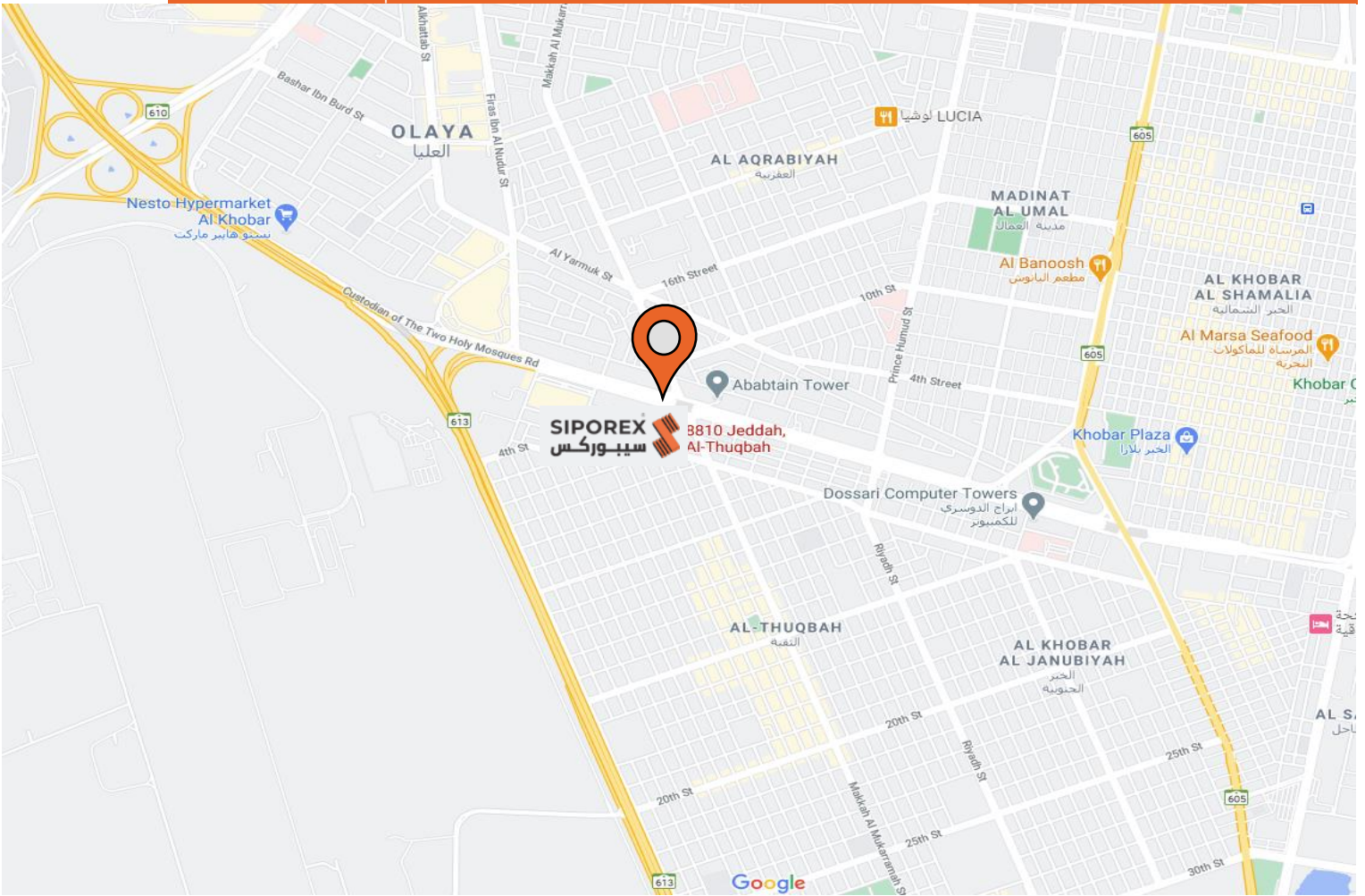
LCC SIPOREX HEAD OFFICE & FACTORY

2nd Industrial City, Riyadh 14331

TEL. (011) 498 1800 FAX. (011) 498 2072



Offices Location Maps



SIPOREX ALKHOBAR BRANCH OFFICE

Al Jawhara Building

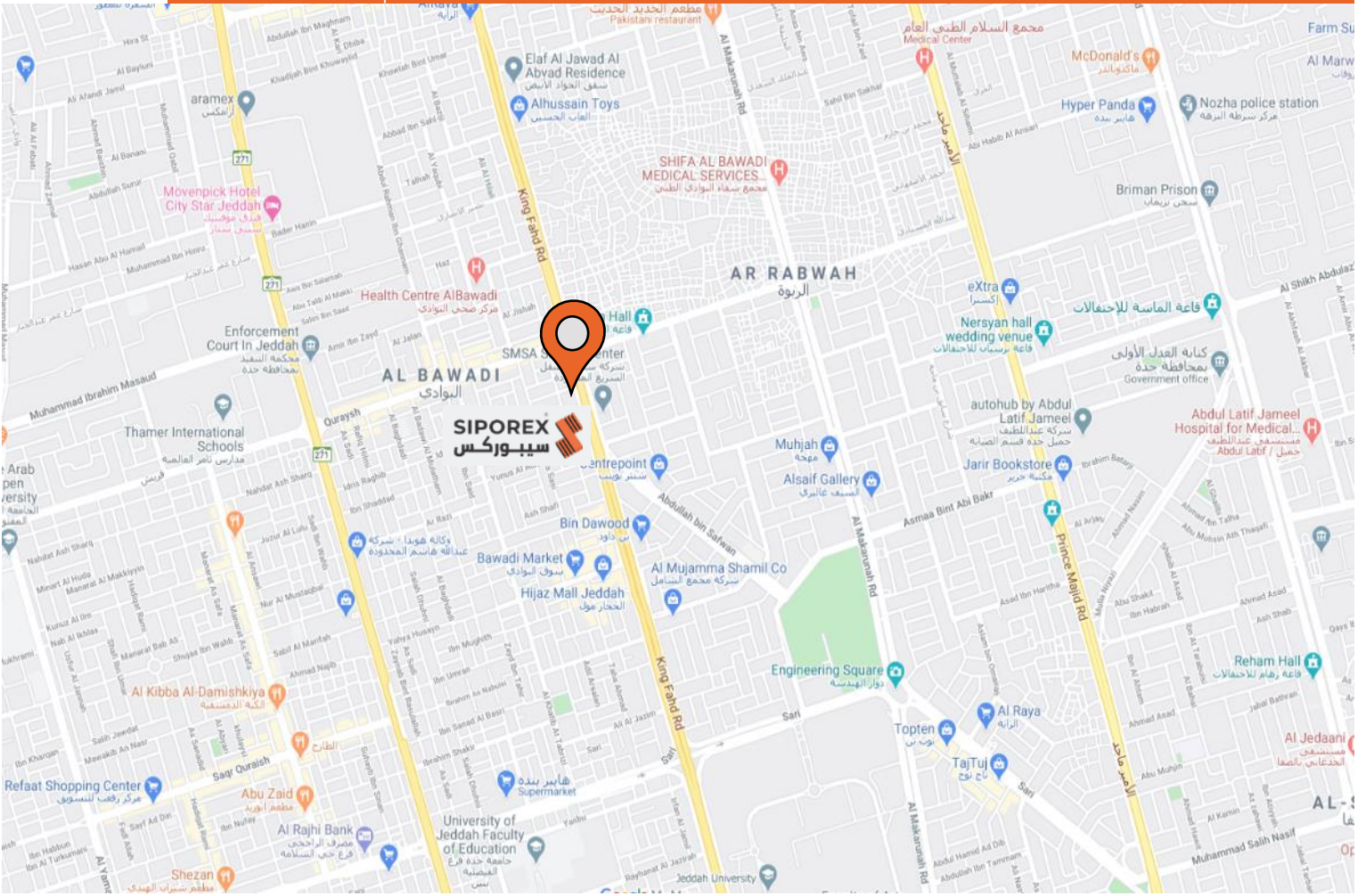
4th Street corner Jeddah Street

Al-Thuqbah, Al Khobar 34623 3315

Mobile No.: 050 496 6911



Offices Location Maps



SIPOREX JEDDAH BRANCH OFFICE

Bin Hamad Center # 3, 4th Floor Office No. 19

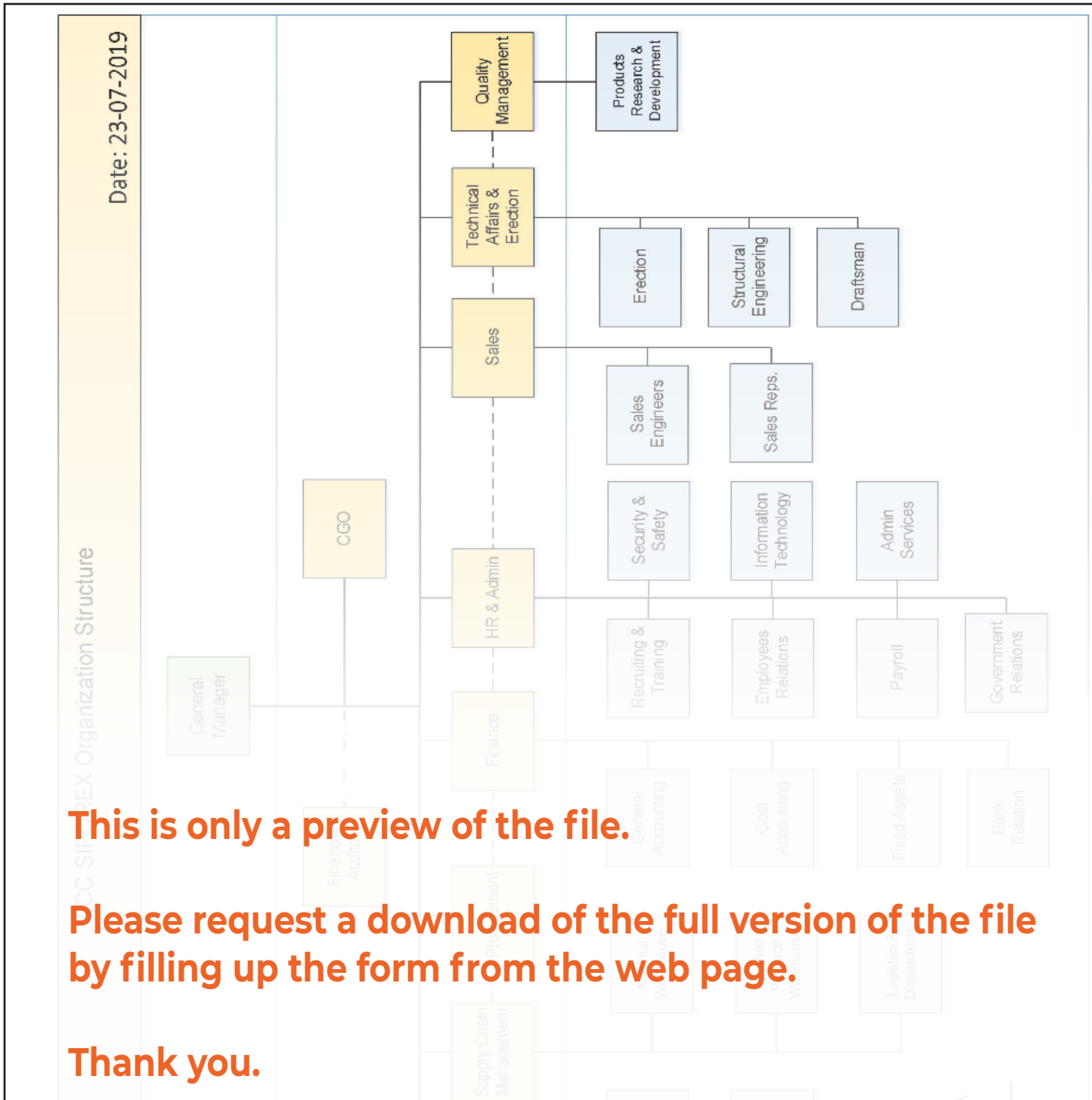
Al Bawadi Dist., Jeddah 23443

TEL # (012) 645 3051

Mobile Nos.: 055 565 1925 | 053 301 1811



Organizational Structure



This is only a preview of the file.

Please request a download of the full version of the file by filling up the form from the web page.

Thank you.



Prequalification Documents

Our Prequalification Document is available to ensure that we are a reasonable prospect as a bidder that participates in a tender with demonstrated ability (expertise, capitalization and resources as a supplier) to perform the final contract in a satisfactory manner.

[Download full version of Prequalification Document](#)